



# Replacement Instructions

## UV41LT and UV79LT

**Please ensure you have read the instructions and that no parts are missing prior to installation.**

### **Please note**

The approximate life of your lamp is one year and will vary depending on several factors, i.e. manufacturers recommendation, amount of use etc.

How do you know when it's time to replace your lamp? We place your name in our records; this allows us to remember when you received your new lamp. We will then remind you when it is time to replace it.

**For support please phone our technical support team on 0800 787 342**

### **Step one**

Disconnect power cord of UV system from electrical outlet.

### **Step two**

Release the earth wire (green & yellow) from the grounding screw.

### **Step three**

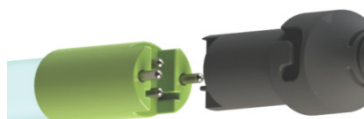
Remove the lamp connector from the reactor (gland nut) by pushing the connector in and turning it ¼ turn counter-clockwise (gently pull on the lamp cable to ensure the connector is seated properly).

### **Step four**

Pull lamp out of reactor still attached to connector.

### **Step five**

Remove the lamp from the connector by pulling it apart.



Lamp & Connector

### **Step six**

Join the new lamp to the connector and carefully insert the UV lamp into the reactor sliding it inside the quartz sleeve located inside the reactor (do not drop the lamp into the reactor). Affix the connector into the gland nut by inserting the connector into the nut and turning the connector approximately ¼ turn to lock the connector to the gland nut.



Lamp Connector & Gland Nut

### **Step seven**

Replace the earth wire with the grounding screw.

**Note: Be careful not to leave fingerprints/marks on the lamp. Use cotton gloves or cloth.**



---

## **Cleaning / Changing the Quartz Sleeve:**

**Depending on the water quality, the quartz sleeve may require periodic cleaning. At a minimum, the quartz sleeve should be cleaned on an annual basis. The following steps outline a basic cleaning procedure.**

### **Step one**

If the system has an inlet shut-off valve, shut this valve off to prevent water flow through the system. If there is no inlet shut-off valve, turn off main water inlet valve (and turn of water pump if you have one).

### **Step two**

Disconnect power cord of UV system from electrical outlet.

### **Step three**

Release water pressure by opening a downstream faucet and close the outlet shut-off valve, if the installation includes one (if there is no outlet shut-off valve, be prepared for water leakage from the system as the head pressure in the system will cause water to flow back through the outlet plumbing and through the reactor).

### **Step four**

Remove the captive ground screw from the ground lug on the UV reactor.

### **Step five**

Remove the lamp connector from the reactor (gland nut) by pushing the connector in and turning it ¼ turn counter-clockwise (gently pull on the lamp cable to ensure the connector is seated properly).

### **Step six**

Pull lamp out of reactor still attached to connector.

### **Step seven**

Remove the gland nut from the reactor exposing the end of the quartz sleeve.

### **Step eight**

Carefully pull the quartz sleeve out of the reactor and remove the o-ring.

### **Step nine**

Using a soft, lint-free cloth or towel wipe the sleeve down using CLR® or LIME-A-WAY® (or other commercial scale cleaner) to remove any scaling or iron deposits that may be on the outside of the quartz sleeve. Be careful not to get any moisture or liquids on the inside of the sleeve.

### **Step ten**

Wipe the sleeve with separate dry cloth.

### **Step eleven**

Once the sleeve is cleaned replace the o-ring and slide the sleeve back into the reactor following the steps outlined on page 8 of the manual.

---